

Name: _____
 Period: _____

About This Activity

Drill three basic rhythmic values with this musical math fact worksheet. Provide the answers for the first column of "facts" (Example: ♪ + ♪ = 2)

Worksheet One/Whole, Half and Quarter Notes

♪ + ♪ = 2



It All Adds Up!

♪ + ♪ =

♪ + ♪ =

♪ + ♪ =

○ + ♪ =

♪ + ♪ =

○ + ○ =

○ + ♪ =

♪ + ○ =

○ + ♪ =

♪ + ♪ =

♪ + ♪ =

♪ + ♪ =

○ + ♪ =

♪ + ♪ =

♪ + ○ =

♪ + ♪ =

○ + ♪ =

♪ + ♪ =

○ + ○ =

♪ + ♪ =

♪ + ♪ =

♪ + ○ =

○ + ♪ =

○ + ○ =

♪ + ♪ =

○ + ♪ =

♪ + ♪ =

♪ + ♪ =

○ + ○ =

♪ + ♪ =

Score: _____ of 10

Score: _____ of 10

Score: _____ of 10

Bonus Question:

○ + ♪ + ♪ + ♪ + ○ + ♪ + ♪ + ♪ + ♪ + ♪ + ○ =



Level 1 Theory Assessment #1

Name: _____

Name these notes:



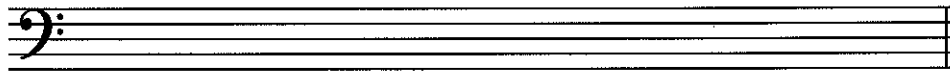
/20



/20

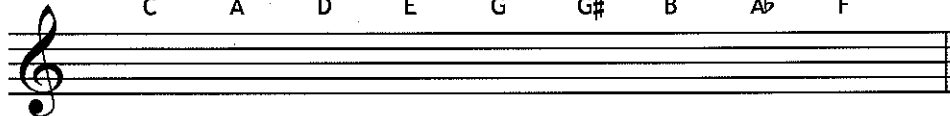
Write these notes:

G A D C F F# B Bb E



/10

C A D E G G# B Ab F

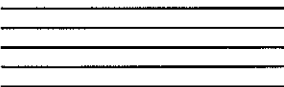


/10

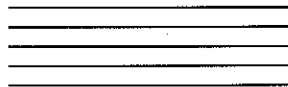
What is the name for the small lines notes above or below the staff are placed on?

/5

Draw a treble clef on this staff:



Draw a bass clef on this staff:



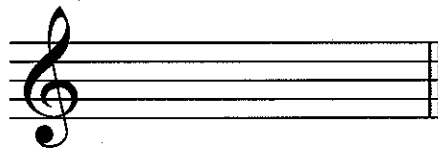
/5

/5

What is the correct term for the two staff music that is used for the piano?

/5

Draw a sharp on the top line of this treble staff:



Draw a flat on the middle line of this treble staff:



/5

/5

What does a sharp do to a note?

/5

What does a flat do to a note?

/5

Total Marks
/100

Name: _____

Date: _____

Reading Bass Clef Notes

MUSIC THEORY WORKSHEET

Name the notes below.

