

Name: _____

Date: _____

Reading Bass Clef Notes

MUSIC THEORY WORKSHEET

Name the notes below.

A musical staff with a bass clef. The notes are: G2 (first space), F2 (first line), E2 (first space), D2 (first line), C2 (first space), B1 (first line), and A1 (first space).

A musical staff with a bass clef. The notes are: A1 (first space), G1 (first line), F1 (first space), E1 (first line), D1 (first space), C1 (first line), and B0 (first space).

A musical staff with a bass clef. The notes are: A1 (first space), G1 (first line), F1 (first space), E1 (first line), D1 (first space), C1 (first line), and B0 (first space).

A musical staff with a bass clef. The notes are: A1 (first space), G1 (first line), F1 (first space), E1 (first line), D1 (first space), C1 (first line), and B0 (first space).

A musical staff with a bass clef. The notes are: A1 (first space), G1 (first line), F1 (first space), E1 (first line), D1 (first space), C1 (first line), and B0 (first space).

A musical staff with a bass clef. The notes are: A1 (first space), G1 (first line), F1 (first space), E1 (first line), D1 (first space), C1 (first line), and B0 (first space).


Lesson 14: Dotted Quarter Notes


A dot written after a note adds one-half of the note's value to the original note's value.

A quarter note equals one beat.

A dot after the quarter note adds $\frac{1}{2}$ beat ($\frac{1}{2}$ of the original value).

A dotted quarter note equals $1\frac{1}{2}$ beats.

$\text{♩} = 1\frac{1}{2}$ beat 

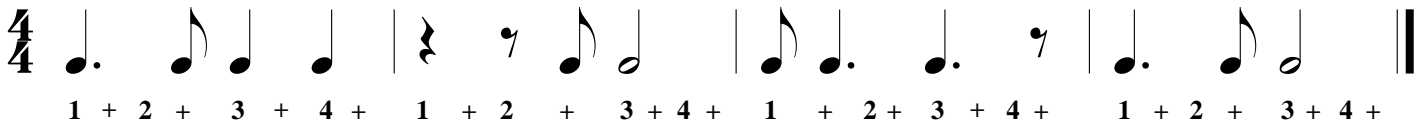
$\cdot = \frac{1}{2}$ beat 

$\text{♩} = 1\frac{1}{2}$ beats 

Hence, the rhythmic value of a **dotted quarter note** is one and one half beats and it is equivalent to a quarter note tied to an eighth note. Count the rhythm by sub-dividing to the half beats.



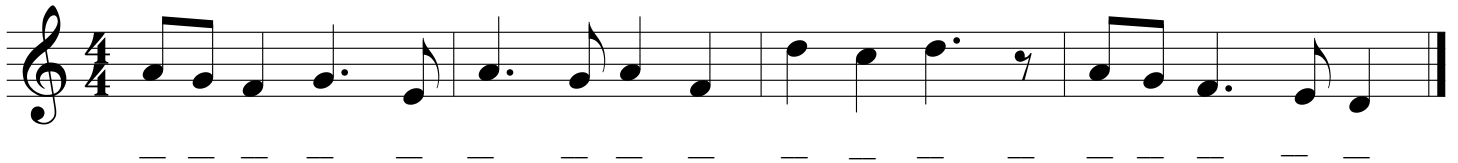
1. Clap the rhythm of the notes while counting the beats out loud.



2. Write the count below the notes indicated. Then clap the rhythm while counting the beats out loud.



3. Write the count below the notes indicated. Then clap the rhythm while counting the beats out loud.



4. Some dotted quarter notes are missing dots behind the quarter note. Add the missing dots.



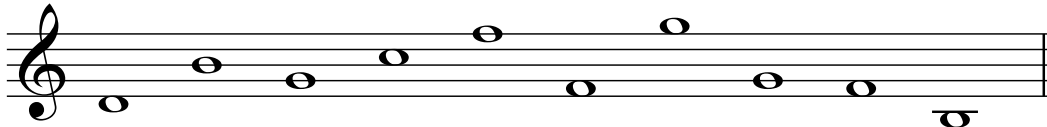
5. The barlines are missing from the following example. Add the missing barlines.



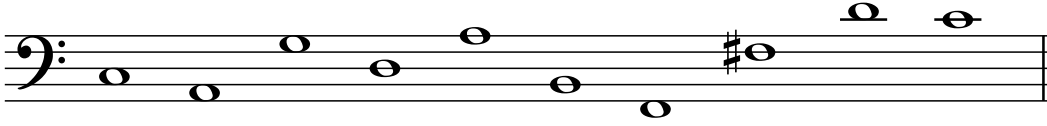
Level 1 Theory Assessment #1

Name: _____

Name these notes:



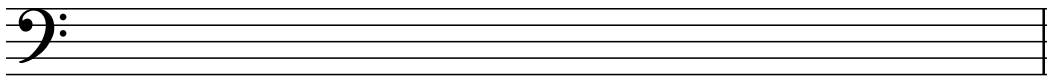
/20



/20

Write these notes:

G A D C F F# B Bb E



/10

C A D E G G# B Ab F

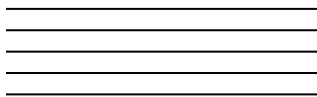


/10

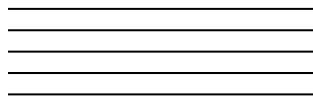
What is the name for the small lines notes above or below the staff are placed on?

/5

Draw a treble clef on this staff:



Draw a bass clef on this staff:



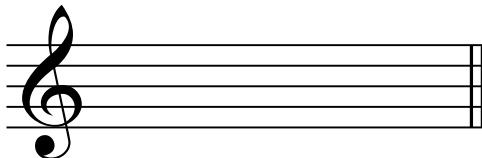
/5

/5

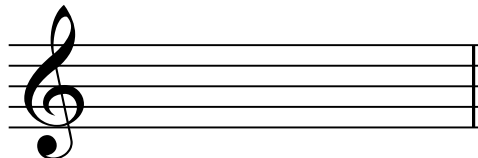
What is the correct term for the two staff music that is used for the piano?

/5

Draw a sharp on the top line of this treble staff:



Draw a flat on the middle line of this treble staff:



/5

/5

What does a sharp do to a note?

/5

What does a flat do to a note?

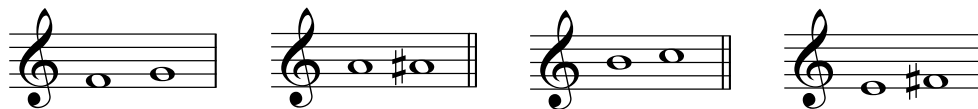
/5

Total Marks /100

Level 1 Theory Assessment #2

Name: _____

Name the following as a half step or a Whole step:



/8

What note is a half step higher than D? _____

What note is a Whole step lower than B? _____

What note is a fifth higher than C? _____

What note is a fourth lower than F? _____

What note is a Whole step higher than E? _____

/8

What does "unison" mean?

/6

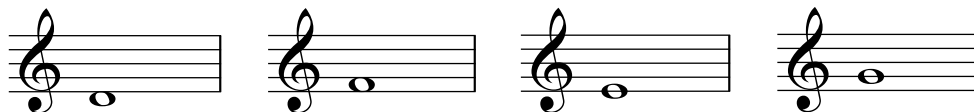
Write these intervals above the given note:

4th

6th

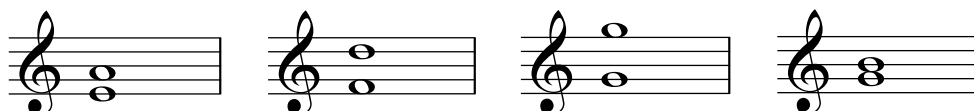
5th

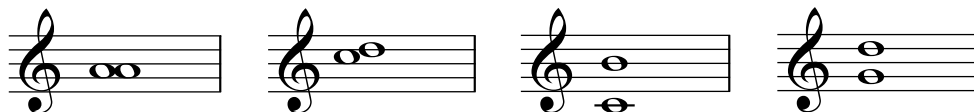
2nd



/16

Name these intervals:





/32

What is another name for a Whole step?

What is another name for a half step?

/10

Circle the half steps in this melody



/20

Total Marks
/100

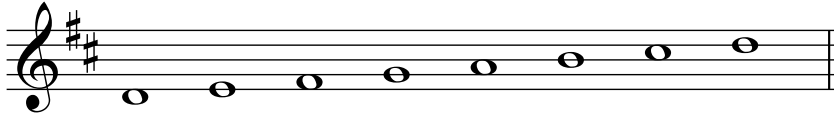
Level 1 Theory Assessment #3

Name: _____

Where do the Half steps occur in a major scale?

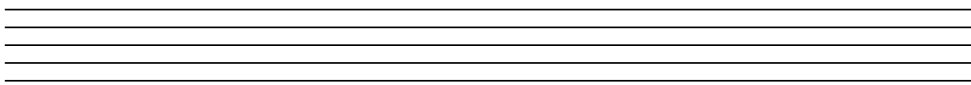
/12

Mark the half steps in this scale with a slur:



/15

Write the scale of C major in the treble staff, one octave ascending, and mark the half steps with slurs:



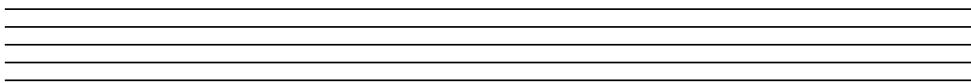
/20

Name the following key signatures:



/8

Write the scale of G major in the bass staff, one octave ascending, and mark the half steps with slurs:



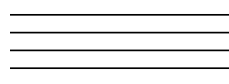
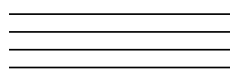
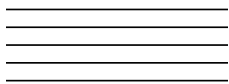
/20

Write the key signatures and tonic triads of the following keys:

F major

C major

G major



/15

Name the key of each of these examples:





/10

Total Marks
/100

Level 1 Theory Assessment #5

Name: _____

Write the meaning of the following Italian terms:

- Allegro: _____
 Andante: _____
 Crescendo: _____
 mezzo forte: _____

/20

Write the Italian term for the following:

- Moderately Soft: _____
 Very Fast: _____
 Gradually becoming Faster: _____
 Slowly: _____

/20

Draw the following symbols:

Segno	Fermata	crescendo	accent

/20

Carefully examine this piece of music and answer the questions below:

- What does the term in measure one mean? _____
 How loud should the opening notes be played? _____
 What is the symbol under measure four? _____
 What does the instruction under measure five mean? _____
 What are the curvy lines above the music called? _____
 What does the "C" symbol at the start mean? _____
 In what key is this piece? _____

/20

Circle the six notation errors in this piece of music, number and explain them:

1. _____
2. _____
3. _____
4. _____
5. _____
6. _____

/20

Total Marks /100
