

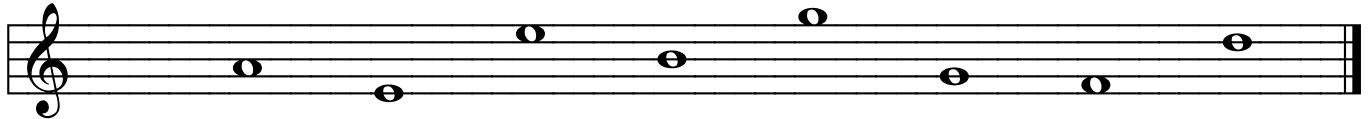
Name: _____

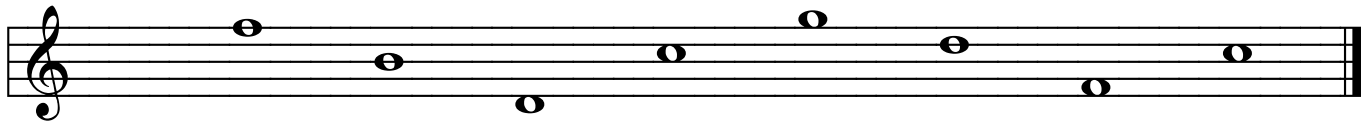
Date: _____

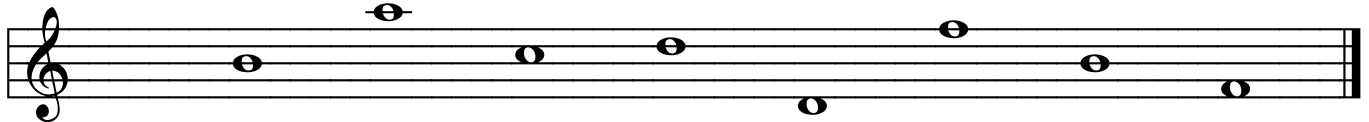
Reading Treble Clef Notes

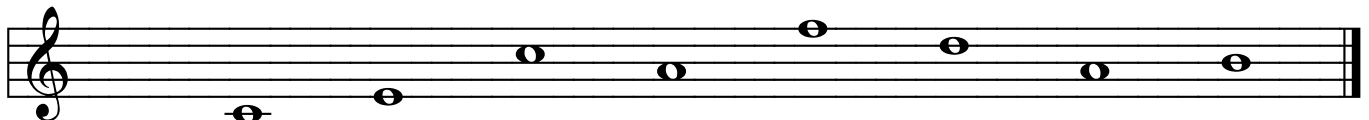
MUSIC THEORY WORKSHEET

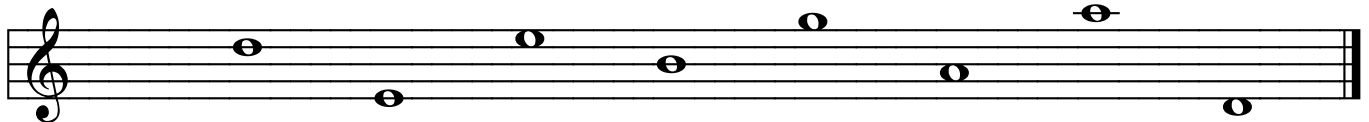
Name the notes below.







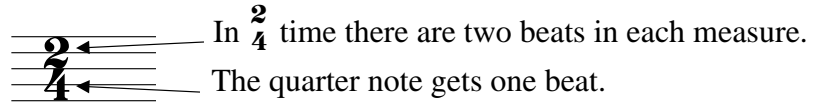
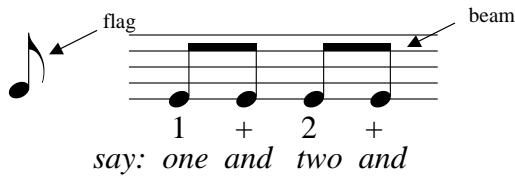






Lesson 11: Time Signatures - $\frac{2}{4}$

An eighth note has a value of one half of a beat. When by itself, an eighth note looks like a quarter note with a flag. When with other eighth notes, the notes eighth notes are connected together with a beam.



An eighth note (♪) = 1/2 beat

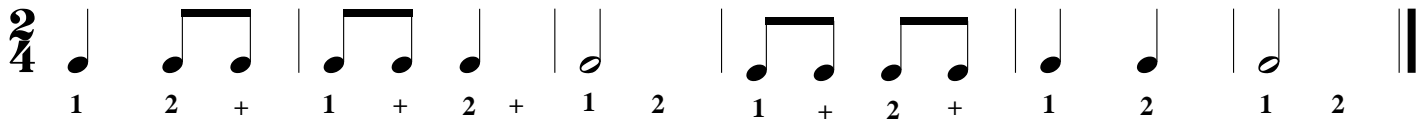
A quarter note (♩) = 1 beat

A half note (♩) = 2 beats

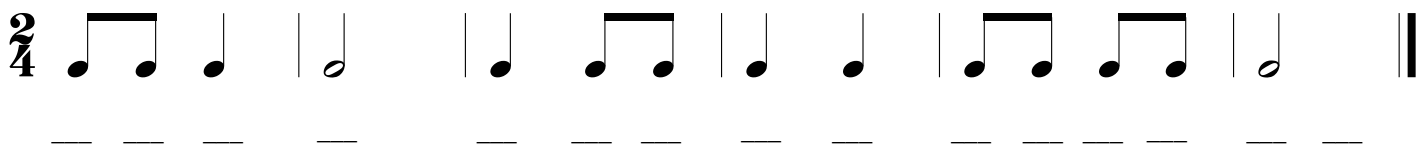
1. Practice drawing eighth notes in the following boxes. An example of each is given.



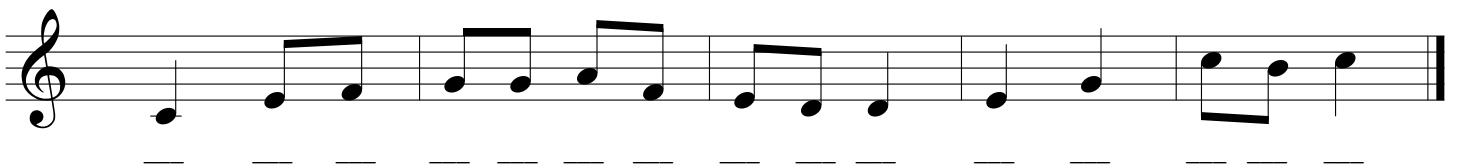
2. Count the beats out loud, then tap the rhythm.



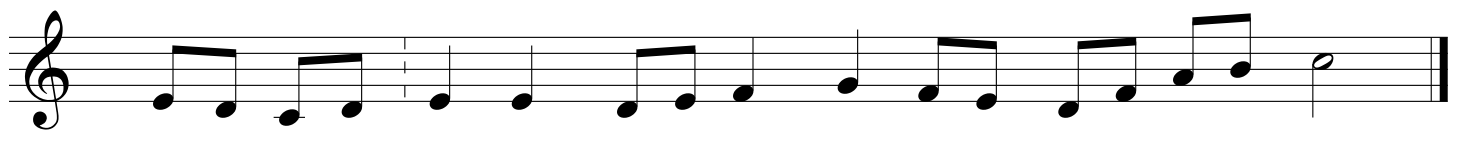
3. Write the beats below the notes. Then count the beats out loud while tapping the rhythm.



4. Write a $\frac{2}{4}$ time signature after the treble clef. Write the beats below the notes. Then count the beats out loud while tapping the rhythm.



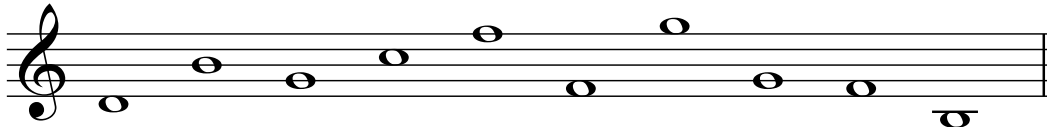
5. Write a $\frac{2}{4}$ time signature after the treble clef. Write the beats below the notes. Draw the missing bar lines.



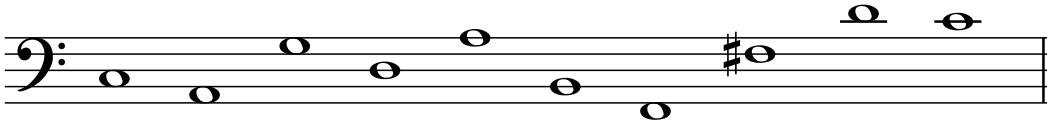
Level 1 Theory Assessment #1

Name: _____

Name these notes:



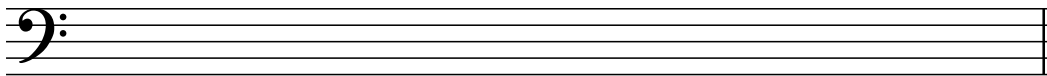
/20



/20

Write these notes:

G A D C F F# B Bb E



/10

C A D E G G# B Ab F

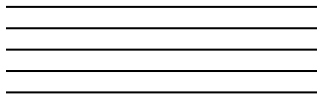


/10

What is the name for the small lines notes above or below the staff are placed on?

/5

Draw a treble clef on this staff:



Draw a bass clef on this staff:



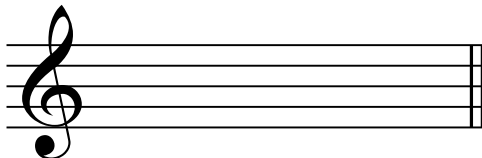
/5

/5

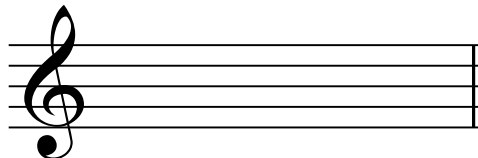
What is the correct term for the two staff music that is used for the piano?

/5

Draw a sharp on the top line of this treble staff:



Draw a flat on the middle line of this treble staff:



/5

/5

What does a sharp do to a note?

/5

What does a flat do to a note?

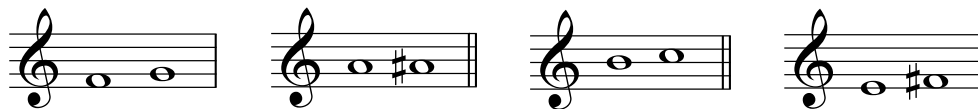
/5

Total Marks /100

Level 1 Theory Assessment #2

Name: _____

Name the following as a half step or a Whole step:



/8

What note is a half step higher than D? _____

What note is a Whole step lower than B? _____

What note is a fifth higher than C? _____

What note is a fourth lower than F? _____

What note is a Whole step higher than E? _____

/8

What does "unison" mean?

/6

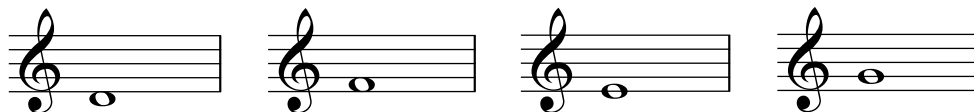
Write these intervals above the given note:

4th

6th

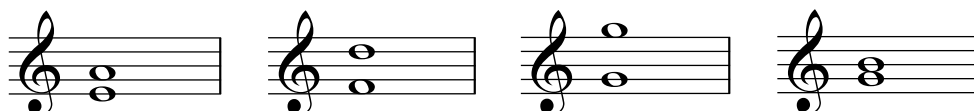
5th

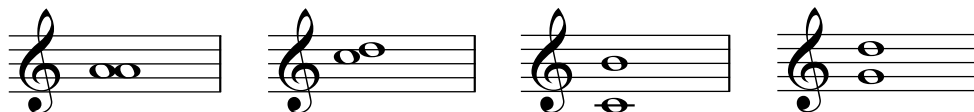
2nd



/16

Name these intervals:





/32

What is another name for a Whole step?

What is another name for a half step?

/10

Circle the half steps in this melody



/20

Total Marks
/100

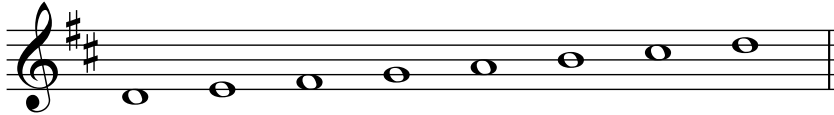
Level 1 Theory Assessment #3

Name: _____

Where do the Half steps occur in a major scale?

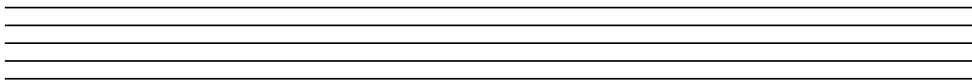
/12

Mark the half steps in this scale with a slur:



/15

Write the scale of C major in the treble staff, one octave ascending, and mark the half steps with slurs:



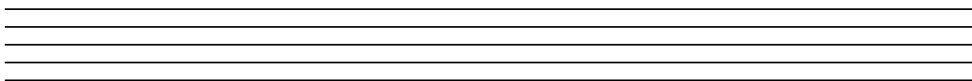
/20

Name the following key signatures:



/8

Write the scale of G major in the bass staff, one octave ascending, and mark the half steps with slurs:



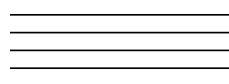
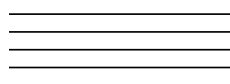
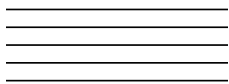
/20

Write the key signatures and tonic triads of the following keys:

F major

C major

G major



/15

Name the key of each of these examples:





/10

Total Marks
/100

Level 1 Theory Assessment #5

Name: _____

Write the meaning of the following Italian terms:

- Allegro: _____
 Andante: _____
 Crescendo: _____
 mezzo forte: _____

/20

Write the Italian term for the following:

- Moderately Soft: _____
 Very Fast: _____
 Gradually becoming Faster: _____
 Slowly: _____

/20

Draw the following symbols:

Segno	Fermata	crescendo	accent

/20

Carefully examine this piece of music and answer the questions below:

Andante

mf

poco a poco crescendo

What does the term in measure one mean?

How loud should the opening notes be played?

What is the symbol under measure four?

What does the instruction under measure five mean?

What are the curvy lines above the music called?

What does the "C" symbol at the start mean?

In what key is this piece?

/20

Circle the six notation errors in this piece of music, number and explain them:

1. _____
2. _____
3. _____
4. _____
5. _____
6. _____

/20

Total Marks
/100